

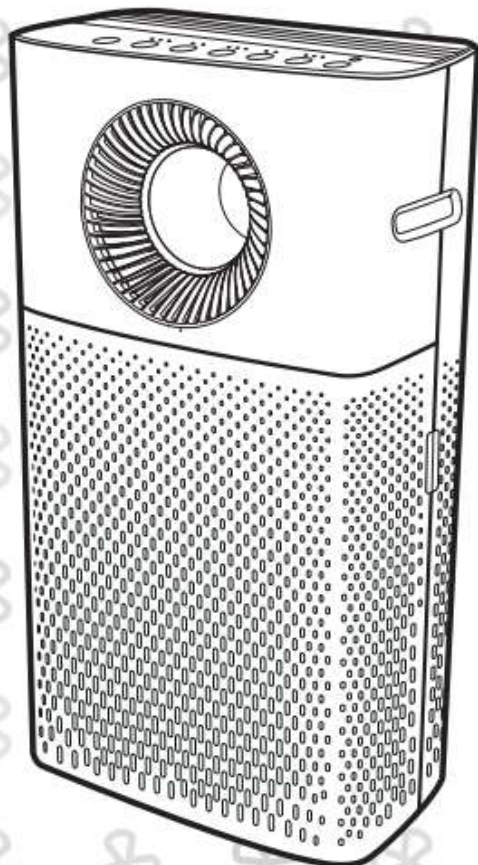


COWAY LOVES THE PLANET
This paper can be recycled.

COWAY

Coway Air Purifier AP-1516D

- This product is for domestic use only. It cannot be used in other overseas countries where the power voltage is different.
- Read and save these instructions.



FEATURES

1. Excellent air cleaning

The cleaning filter system has been optimized for reduction of bacteria and removal of invisible ultrafine dust and others from indoor air.



2. Powerful clean air flow

Quickly circulates purified air in different directions through normal flow, Air Jet, and Surround .



3. Fine Dust Filter

The fine dust filter effectively captures not only large dusts but also fine dusts such as pollen, mold, and pet dander.



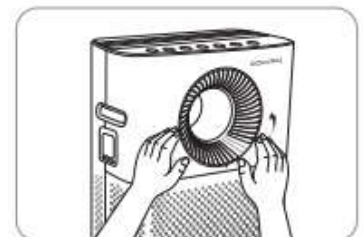
4. Real-time air purification display

Four colored indicators provide visible notice of current air quality in real time .



5. Detachable outlet grilles

Detachable outlet grilles are installed on top/front of the product for easier, more effective cleaning than in other products with fixed covers.



DEAR CUSTOMERS

Thank you for using the **Coway air purifier**.

Please be sure to read this user manual to use and maintain your air purifier correctly.

If you experience any problems during use, you can refer to this user manual to resolve them.

This user manual contains the product warranty, so please store it safely.

CONTENTS

FOR INFORMATION

- | 03 | SAFETY INFORMATION
 - Danger
 - Warning
 - Caution
- | 07 | PARTS NAME
- | 09 | AIR PURIFICATION PROCESS

MAINTENANCE

- | 17 | CLEANING METHOD
 - Product
 - Filter
- | 20 | FILTER REPLACEMENT

HOW TO USE

- | 10 | BEFORE USE
 - How to install filter
- | 11 | INDICATORS AND BUTTONS
- | 13 | HOW TO USE
- | 16 | ADJUST PARTICLE SENSOR

OTHERS

- | 22 | TROUBLE SHOOTING
- | 23 | SPECIFICATION
- | 25 | WARRANTY DETAILS

- Keep your user manual in a readily accessible or visible place. -

SAFETY INFORMATION

This is safety information. Be sure to follow it!

The warnings are to keep users safe and avoid damage to the product.

Please read them carefully and use the product correctly.

▲ DANGER : Failing to follow the precautions below may result in serious injury or even death.

- Do not use damaged power plugs or loose sockets.
- The power plug must be plugged into only 220V-240V~50Hz/60Hz sockets.
- Do not pull on the power cord to move the product.
- Do not touch the power plug with wet hands.
- To avoid damaging or warping the power cord, do not use excessive force to bend the power cord or put heavy objects on top of it.
- Do not repeatedly connect and disconnect the power plug.
- If water enters the power supply, unplug the power and completely dry before using again.
- Be sure to unplug the power during product repair, maintenance or part replacement.
- If the power plug's pins or contact area become covered in dust or water, wipe them thoroughly.
- Do not plug several electric appliances into one socket, and use only a dedicated socket.
- Unplug the power when not being used for a long time.
- Do not carelessly connect or tamper with the power cord.
- If the supply cord is damaged, it must be replaced by the manufacturer, its service agent or similarly qualified persons in order to avoid a hazard.
- Do not install near electric heaters.
- Do not put on top of electric products like heaters or televisions.

-
- Do not install in places with a lot of humidity or dust or places where water (rainwater) splashes.
 - Do not use or store combustible gases or flammable materials near this product.
 - If there is any strange sound, burning smell or smoke from the purifier, immediately unplug the power plug and contact a service center.
 - Never immerse the product in water.
 - Do not spray flammable materials such as insecticides or air fresheners on the intake.
 - Do not open, repair or modify the purifier yourself.
 - Do not put bowls of water, chemicals, food, small metal objects, or flammable materials on top of the purifier.
 - Clean after unplugging the power.
 - Do not spray water directly on the purifier or use benzene, thinners, etc. to wipe it during cleaning.
 - Do not insert sharp objects such as picks into the particle sensor.
 - Do not put fingers or foreign matter (pins, sticks, coins, etc.) into the outlet.
 - Do not let children hang from or climb on the purifier.
 - Be careful that children do not put their hands in the outlet.
 - Be careful that children do not put their hands into the hole of the product.
 - Replace the filter with a new one when the time comes.
 - Do not spray water directly on the purifier.

SAFETY INFORMATION

▲ WARNING : Failing to follow the precautions below may result in considerable physical injury or property damage.

- Do not unplug by pulling on the power cord.
- Do not use in baths, showers, swimming pools, or other areas where the purifier may be in direct contact with water.
- Children shall not play with the appliance.
- Cleaning and user maintenance shall not be made by children without supervision.

▲ CAUTION : Failing to follow the precautions below may result in slight physical injury or property damage.

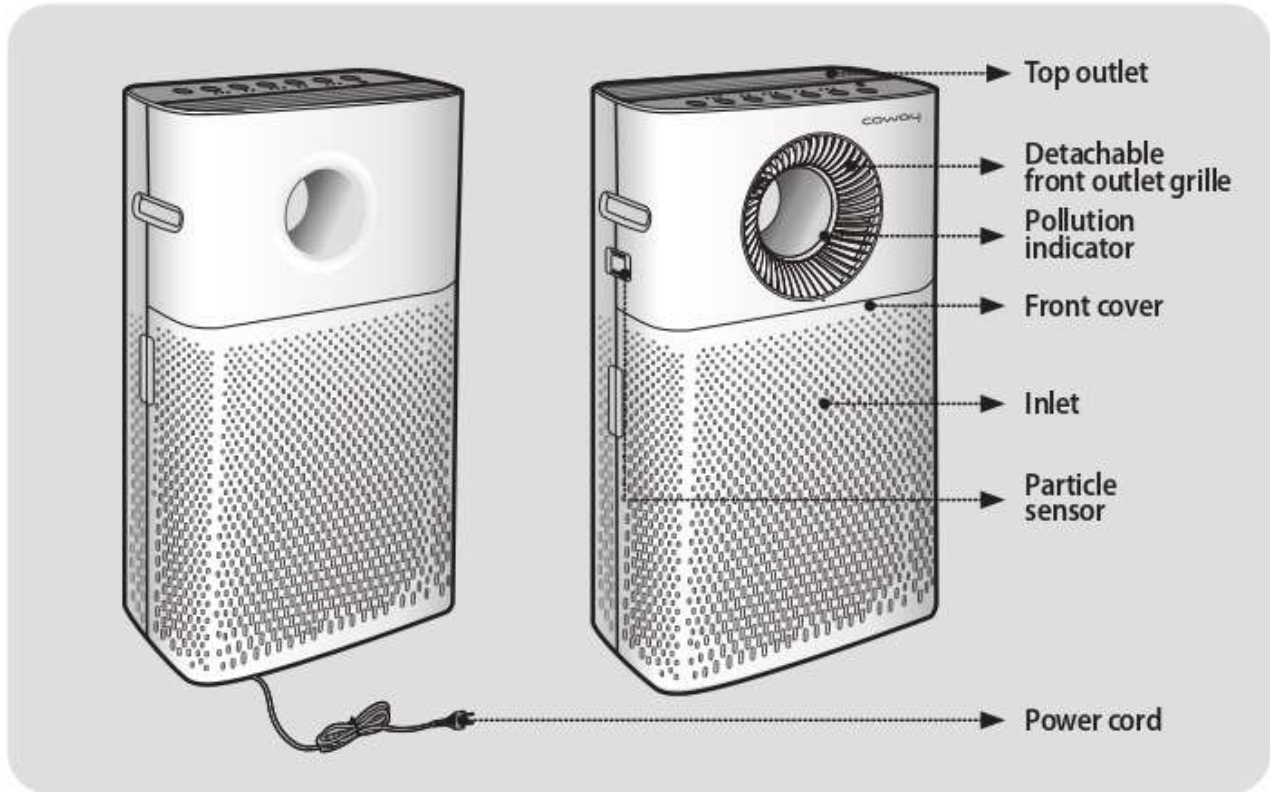
- Do not unplug the power or move the purifier while it is operating.
- If unusual sound, odor, or smoke comes from the purifier, immediately unplug the power and call our service center.
- Do not install on a slope.
- Do not excessively impact or use excessive force on this product.
- Use at least 20 cm away from walls or other objects on each side.
- Install the purifier in a place where it is not blocked on any side so air can circulate well.
- Do not use in BBQ or other restaurants where odor, smoke, or oil may occur.
- Do not use in direct sunlight.
- Do not install in a high place.
- Do not touch the controls while power is turning on.

-
- Do not push or lean on the purifier. The purifier may fall over.
 - Do not use the product for any purpose other than air purification.
 - Do not let a person be exposed to breeze expelled from the front of purifier for a long time.
 - Do not allow breeze expelled from the purifier front near your face.
 - Do not use for a long time in places that are sealed or where children, the elderly or sick are.
 - Do not block the outlet with laundry or curtains.
 - Remove dust from the pre-filter with a vacuum cleaner or water.
 - Periodically wash the pre-filter and dry it sufficiently in a shady place with good ventilation.
 - Do not repeatedly push the flow mode or Rapid Circulation mode buttons.
 - This appliance can be used by children aged from 8 years and above and persons with reduced physical, sensory or mental capabilities or lack of experience and knowledge if they have been given supervision or instruction concerning use of the appliance in a safe way and understand the hazards involved.
 - Children should be supervised to ensure that they do not play with the appliance.

READ AND SAVE THESE INSTRUCTIONS

PARTS NAME

Rear / Front



Top



Components



User manual

CLEANING METHOD



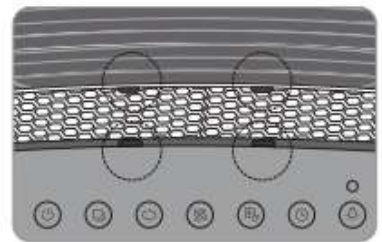
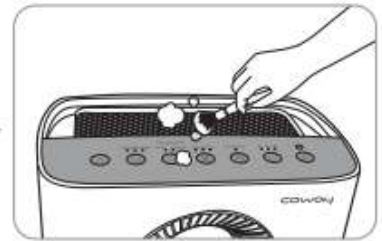
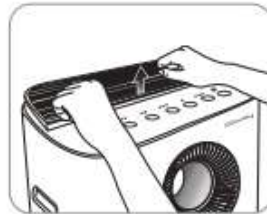
Tips

- Always unplug the power cord before cleaning.
- Do not use detergents containing organic solvents (solvents, thinners, etc.), bleach, chlorine or abrasives to clean.
- Do not immerse the purifier in water or sprinkle water on it.

■ Cleaning the outlet and detachable outlet grille

Lift the detachable outlet grille on top of the outlet, then clean the grille and outlet with a soft brush or vacuum cleaner.

- * Be careful not to let dust enter the outlet while cleaning.
- * When reassembling the upper detachable outlet grille, put the grille tabs into the purifier slots as in the picture on the right.

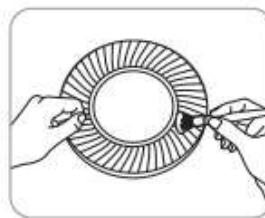


■ Cleaning the detachable front grille

Turn the front grille counterclockwise while removing it. Clean the detached front grille outlet with a soft brush or vacuum cleaner.

When cleaning inside the purifier, wipe with a soft, dry cloth.

- * If there is severe pollution, wipe with a damp cloth (do not use abrasives).
- * Take care that dust does not fall inside the purifier while cleaning.

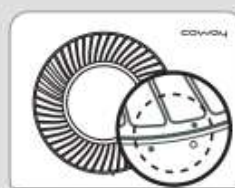


[Cleaning the grille]



[Cleaning the interior]

- ▲ When reassembling after cleaning the front grille, line up the front grille with the display. Turn the front grille clockwise to fix it in place.



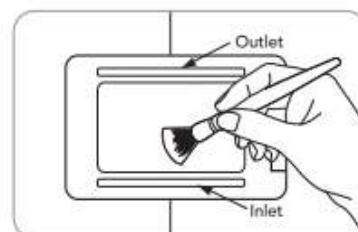
[While grille is opened]



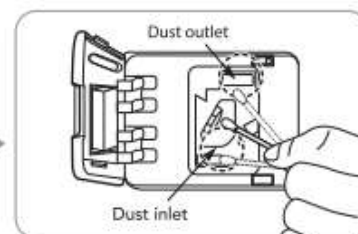
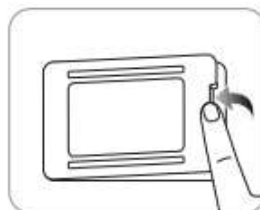
[While grille is closed]

■ Cleaning the particle sensor (clean every 2 months)

1. Clean the particle sensor air inlet and outlet with a soft brush or vacuum cleaner.
* Take care that dust does not fall inside the purifier while cleaning.



2. Open the particle sensor cover on the upper side of the purifier. (Use the particle sensor cover slots to open the cover.) Wet a cotton ball with a small amount of water and wipe the lens, dust inlet and outlet, then wipe again with a dry cotton ball to remove moisture.

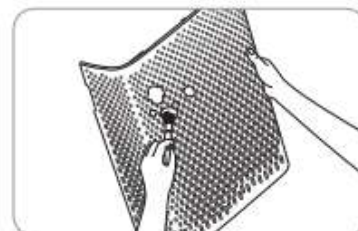


- * If cleaning is not done regularly, the performance of the particle sensor may decrease.
- * Clean more often in very dusty environments.

■ Cleaning the front cover

Remove the front cover from the purifier and then wipe away dust stuck to the surface with a soft, dry cloth or soft brush.

- * If there is severe contamination, use a damp cloth (do not use abrasives).



■ Cleaning the purifier

Wipe with a soft, dry cloth.

- * If there is severe contamination, use a damp cloth (do not use abrasives).



CLEANING METHOD



Tips

- Always unplug the power cord before cleaning the filter.
- The pre-filter can be reused after dust removal and cleaning with water.
- If the pre-filter is not cleaned for a long time, the product performance may decrease and problems may occur.
- The fine dust filter, deodorization filter and HEPA filter cannot be reused after cleaning. Never clean them with water.

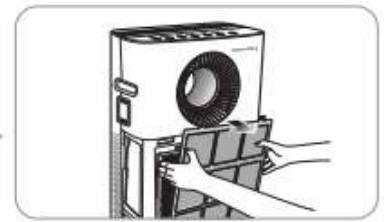
■ Pre-filter (clean every 2-4 weeks)

1. Pull both sides of the front cover to open.



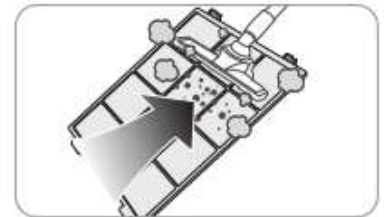
2. Pull the pre-filter handle while taking it out to separate it from the fine dust filter.

* Be careful that dust doesn't fall out during removal.



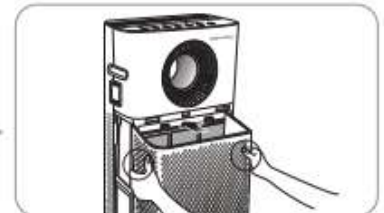
3. Remove dust with water or a vacuum cleaner depending on the degree of contamination.

* Be careful not to let dust enter the purifier while cleaning.



4. Push the completely dry pre-filter all the way into the purifier to install it. Close the front cover again.

* When you assemble the fine dust filter, be sure that the blue side of the filter must be at the front



FILTER REPLACEMENT

■ How to replace

- Refer to the filter installation method specified on page 10 to replace the filters.
- During filter assembly, be sure to check the front.
- Only use genuine Coway filters to keep the purifier at its optimal performance.
- Always unplug the power plug before replacing filters.

■ Filter cleaning and replacement cycle

Filter	Cleaning / replacement time	Cleaning / replacement
Pre-filter	Once / 2-4 weeks	Clean and wash
Fine Dust filter	Once / 4 months	Replace
Deodorization filter	Once / 12 months	Replace
HEPA filter	Once / 12 months	Replace

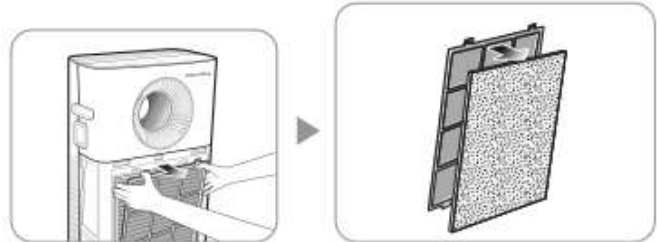
* Based on 24 hour (1 day) use at low air cleaning level

* The filter replacement cycle is the recommended cycle and may vary depending on usage environment.

FILTER REPLACEMENT

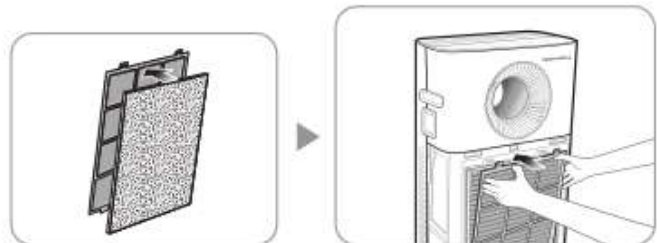
■ How to replace Fine Dust filter (replace every 4 months)

1. Open the front cover and remove the pre-filter from the purifier, then detach the fine dust filter from the pre-filter.



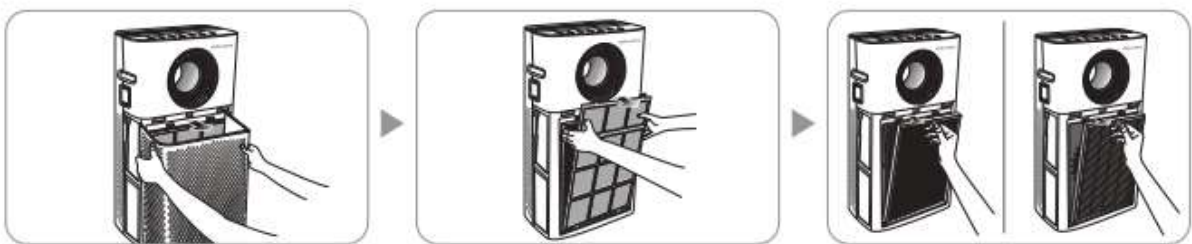
2. Remove the plastic packaging from the new fine dust filter, then put it on the back of the superfine fiber net pre-filter. Reassemble the pre-filter into the purifier in the reverse order you removed it, then close the front cover.

* When you assemble the fine dust filter, be sure that the blue side of the filter must be at the front.



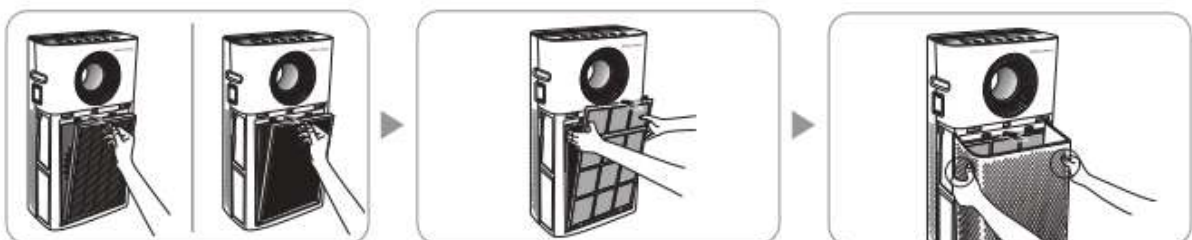
■ How to replace Deodorization/HEPA filters (replace every 12 months)

1. Open the front cover and remove the pre-filter and fine dust filter from the purifier, then take out the deodorization filter and HEPA filter.



2. Replace them with a new deodorization filter and new HEPA filter with the plastic packaging removed. Reassemble the purifier in the reverse order you disassembled it and close the front cover.

* Check the filters' front display.



TROUBLE SHOOTING

The product may not operate correctly due to trivial reasons or inexperienced usage, although these are not product malfunctions. In such cases, the problem can be solved easily without the help of a service center if the following items are checked. If the problem is not resolved even after checking the following, please contact a service center.

Problem	Check	Steps to take
There is no breeze.	• Is the power plugged in?	The power plug must be plugged into 220V-240V~50Hz/60Hz socket.
	• Is the entire display off?	Press the power button, then select your desired function.
	• Is there a power failure?	After the power comes back on, use the purifier.
Air cleaning level doesn't change.	• Is the purifier operating in manual mode?	Turn on your desired operating mode.
	• Is the purifier operating in Turbo/Silent mode?	Air cleaning level is not selected in Turbo/silent modes, but rather runs at a set level.
	• Is the room dark?	Air cleaning level is set at minimum during sleep mode.
	• Is the purifier operating in Quick cleaning mode?	Air cleaning level is set at maximum during Rapid Circulation mode.
Air cleaning level is very low.	• Is it past time for filter cleaning and replacement?	Check your filter cleaning and replacement cycle and clean or replace filters.
Pollution level doesn't change.	• Is there dust on the particle sensor lens ?	Clean the particle sensor lens (p. 18).
	• Does the pollution level continuously appear high?	Set sensor sensitivity to insensitive or standard (p. 16).
	• Does the pollution level continuously appear low?	Set sensor sensitivity to sensitive or standard (p. 16).
There's a smell from the outlet.	• Is it past time for filter cleaning and replacement?	Check your filter cleaning and replacement cycle and clean or replace filters.
The pollution indicator flickers.	• Request service.	
If other functional flaws occur	• Check the problem, then unplug the power and request service.	

SPECIFICATION

Product name	Air purifier
Model name	AP-1516D
Dust collection method	Mechanical dust collection method(HEPA filter)
Safety equipment	Power is shut down when the front cover is opened
Installation location	For indoor use
Maximum air cleaning level	6.1 m ³ /Min
Product size	410 mm (width) x 240 mm (depth) x 765 mm (height)
Product weight	12 kg

- ▶ Specifications may vary slightly without prior notice to improve product performance.
- ▶ Data was measured for Coverage and maximum air cleaning level in normal flow mode and Turbo mode.

MEMO

WARRANTY DETAILS

Congratulations on your purchase! It is our aim to provide you with quality products that you can trust. Our products come with guarantees that cannot be excluded under the Australian Consumer Law. You are entitled to a replacement or a refund for a major failure and for compensation for any other reasonably foreseeable loss or damage. You are also entitled to have the goods repaired or replaced if the goods fail to be of acceptable quality and the failure does not amount to a major failure.

The Guarantee

The product is guaranteed to be free from defects in workmanship and parts for a period of 24 months from date of purchase for domestic use and 12 months for commercial use. Defects that occur within this warranty period, under normal use and care, will be repaired, replaced or refunded at our discretion, solely at our option with no charge for parts and labour. The benefits conferred by this warranty are in addition to all rights and remedies in respect of the product that the consumer has under the Trade Practices Act and similar state laws.

Proof of Purchase

This warranty is valid for the original purchase and is not transferable. Please keep your purchase docket or receipt as proof of purchase and as proof of date on which the purchase was made. The purchase docket (or a copy) or receipt must be presented with the warranty when making a claim under this warranty.

Service during the Warranty Period

To claim for warranty, contact us on 1300 800 200 or support@andatech.com.au to get an RA# (Return Authorization Number). Ensure that the RA# is clearly stated on the outside of the packaging and that the product is properly packaged so that no damage occurs to the product during transit. Shipping of the product back to us for warranty will be at your cost. A product return without the RA# or proof of purchase will not be accepted.

Extent of Warranty

This warranty is limited to defects in workmanship or parts. All defective products or parts will be repaired or replaced. This warranty does not cover manuals and packaging.

Normal Wear and Tear

This warranty does not cover normal wear and tear to the product or parts.

Exclusions

This warranty does not cover:

- Any defect caused by an accident, misuse, abuse, improper operation, lack of reasonable care, unauthorised modification, loss of parts, tampering or attempted repair by a person not authorised by the distributor.
- Any product that has been damaged by a lightning strike either directly or indirectly or a main power surge or liquid ingress.
- The product if it is located outside of Australia.
- Any damage caused by improper power input or improper cable connection.

Andatech Pty. Ltd.

PO Box 3038, Nunawading VIC 3131, Australia.

Phone: 1300 800 200 **Fax:** 1300 883 802 **Email:** support@andatech.com.au

COWAY

www.coway.com